

FEATURES

- L shape handles with curved angle
- Embellisher cover plate for covering the cylinder and keyhole
- Built in stainless steel
- Pair of handles without square spindles (sold separately):
 - Ref.950001999 → Square Spindle with spring. Distance from the centre of the lock to the door side 15-20 mm (for handles with hole for short square spindle)
 - Ref.950001998 → Square Spindle with spring. Distance from the centre of the lock to the door side 15-30 mm.
 - Ref.950001997 → Square Spindle with spring. Distance from the centre of the lock to the door side 31-45 mm.
 - Ref.950001996 → Square Spindle with spring. Distance from the centre of the lock to the door side 46-60 mm.
- Dimensions: 149 x 53 x 65 mm
- Rose diameter: 53 mm
- Conformity with the CE, UKCA directives

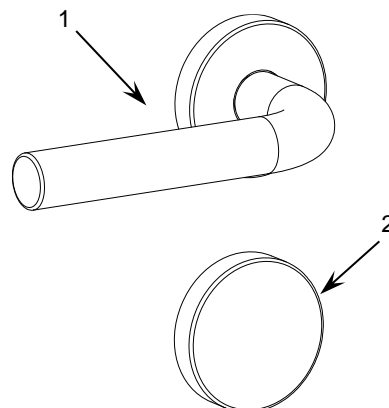
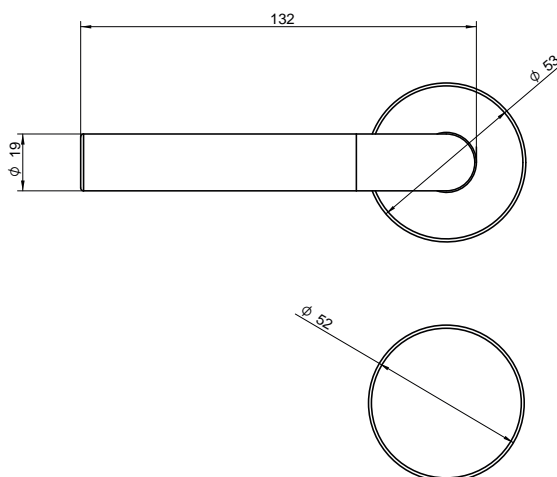


Figure 1. Handle and cylinder cover plate

1. Handle	2. Cylinder cover plate
-----------	-------------------------

GENERAL SPECIFICATIONS	
CONCEPT	DESCRIPTION
Installation	See document <i>IDAC Installation Manual</i>
Weight	379 g
Material	Stainless steel
Finish	Stainless steel

DIMENSIONS (mm)



SAFETY INSTRUCTIONS

- Installation should only be performed by qualified professionals according to the laws and regulations applicable in each country.