

# **WORKING WITH ZENNIO DEVICES IN ETS**



## INDEX

INTRODUCTION .....	3
IMPORT DEVICE – FIRST STEP (PR* AND VD* EXTENSIONS) .....	3
IMPORT DEVICE – SECOND STEP (PR* AND VD* EXTENSIONS) .....	4
IMPORT DEVICE – THIRD STEP (PR* EXTENSION) .....	5
IMPORT DEVICE – THIRD STEP (VD* EXTENSION) .....	6

## INTRODUCTION

The **aim** of this documentation is to **show** how to **import Zennio devices** within the **ETS** tool (programming tool of the home and building control standard KNX)

At the time of import the products database, you can find two types of files:

### **VD\*** files

Extension belongs to the devices database within the KNX standard. The associated number after the letters VD depends on the ETS software version that has created this database.

### **PR\*** files

Extension belongs to the projects within the KNX standard, in which you can find the devices database. The associated number after the letters PR depends on the ETS software that has created this project.

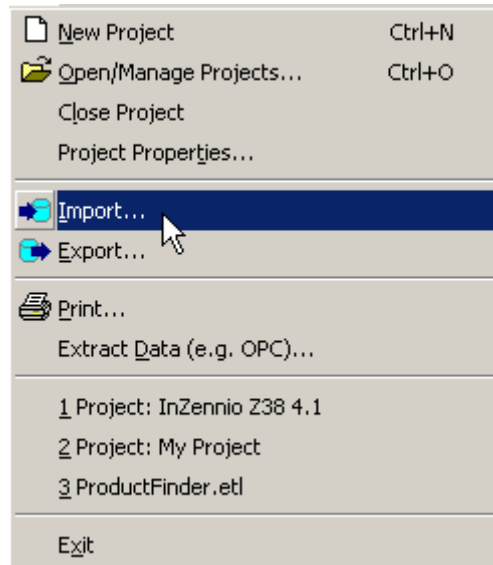
## IMPORT DEVICE – FIRST STEP (PR\* AND VD\* EXTENSIONS)

The first step is to download the ETS files related with the desired device, from the Zennio webpage, in the downloading area. This file can be a VD\* file or a PR\* file.



## IMPORT DEVICE – SECOND STEP (PR\* AND VD\* EXTENSIONS)

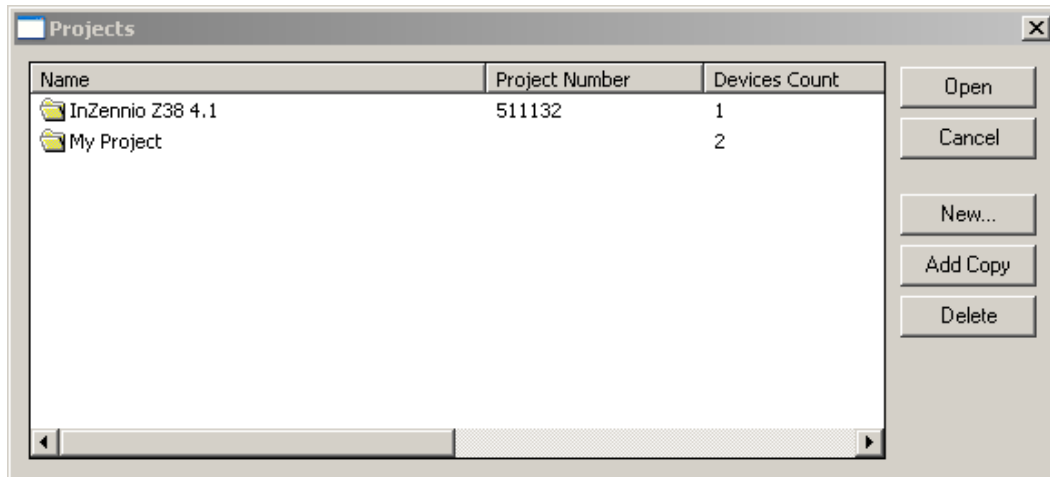
The second step is to import the PR\* or VD\* file downloaded in the first step, using the IMPORT tool that you can find in the FILE tab on ETS.



## IMPORT DEVICE – THIRD STEP (PR\* EXTENSION)

The third step, in case of working with a PR\* file, is to open the imported project, in which you can find the device you want to insert in your project.

Therefore, the project management has to be opened in this step.



Within the project management, you can find the new imported project.

Once the new Project has been opened, follow these steps:

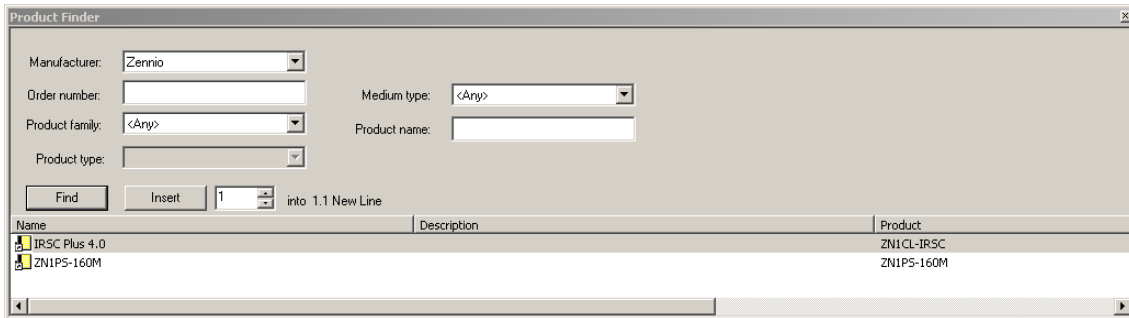
- Select the only device you find in this Project, and COPY (CTRL + C, or click in right button and COPY option)
- Close the new imported Project.
- Open the Project in which you want to insert the new device.
- Select the line where you want to insert the device.
- PASTE the device (CTRL + V, or click in right button and PASTE option)

Once you followed these steps, you can start to work with the new imported device. For further explanation, please watch the video recorded by Zennio technical support, called **WORKING WITH ZENNIO DEVICES IN ETS**, or click in the following link:

- **WATCH VIDEO (choose HD option for higher quality)**

## IMPORT DEVICE – THIRD STEP (VD\* EXTENSION)

Once the VD\* file has been imported in ETS, it is available when inserting a new device (select your line, click in right button, INSERT option). In the following figure the device database window is showed, in which two VD2 files from Zennio have been imported.



COMMENTS to:

EMAIL: [soporte@zennio.com](mailto:soporte@zennio.com)

SUBJECT: WORKING WITH ZENNIO DEVICES



**¡JOIN THE ZENNIO COMUNITY!**

<http://zennio.zendesk.com>

**ON LINE TECHNICAL SUPPORT**

**ZENNIO PRODUCTS FORUMS**