

# Partial Downloads in ETS

## INDEX

Introduction.....	3
Partial downloads – first step: configure parameters.....	4
Partial downloads – second step: programming the devices.....	5

## INTRODUCTION

The objective of this document is to provide Zennio users a basic understanding on how partial downloads work in ETS (device programming tool for the KNX standard).

There are three different options when programming devices with the ETS:

- Program Individual address
- Download Application Program
- Partial Downloads

### **IMPORTANT:**

**DOWNLOAD APPLICATION PROGRAM option must be used with the last available application program version before using the device for the first time.**

After downloading the complete application program, partial downloads are really useful to reduce the downloading time onto the devices, as these are enough after making any change on the device configuration or after linking group addresses with communication objects.

## PARTIAL DOWNLOADS – FIRST STEP: CONFIGURE PARAMETERS

First of all, import all the devices you need in your project in the ETS and proceed with a complete application program download on them.

***Note:** If you don't know how to import devices in ETS, you can find an explanatory video together with a .pdf document in the "FAQ Area" under the "SUPPORT section" in our web page.*

Parameterize the devices in the project to meet the required objectives and then link the "Added Group Addresses" with the appropriate communication objects

The screenshot displays two windows from the ETS software. The top window, titled "Topology in prueba luzen", shows a hierarchical tree of devices. Under "1.1.2 LuZen ONE", several objects are listed with their respective group addresses and functions. The bottom window, titled "Group Addresses in prueba luzen", shows a table mapping these objects to specific devices.

Number	Name	Group Addresses	Object Function
2	Light Dimming (smooth)	0/0/1	4 bits dimmer ctrl
3	Light Precise Dimming (at once)		1 byte dimmer ctrl
4	Light Precise Dimming (smooth)	0/0/2	1 byte dimmer ctrl
6	Light status	0/0/4	0%=Off; 100%=On
0	ON/OFF (at once)		0=Off; 1=On
1	ON/OFF (smooth)	0/0/3	0=Off; 1=On
5	ON/OFF status	0/0/5	0=Off; 1=On

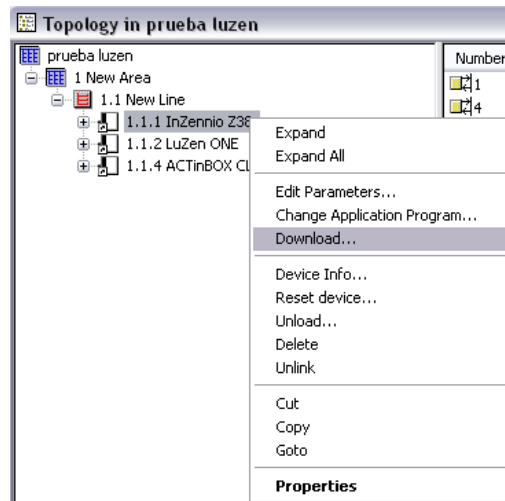
  

Object	Device
2: Light Dimming (smooth) - 4 bits dimmer ctrl	1.1.2 LuZen ONE
30: b) [Home; Box 1] Light Dimming - 4 bits dimmer control	1.1.1 InZennio Z38

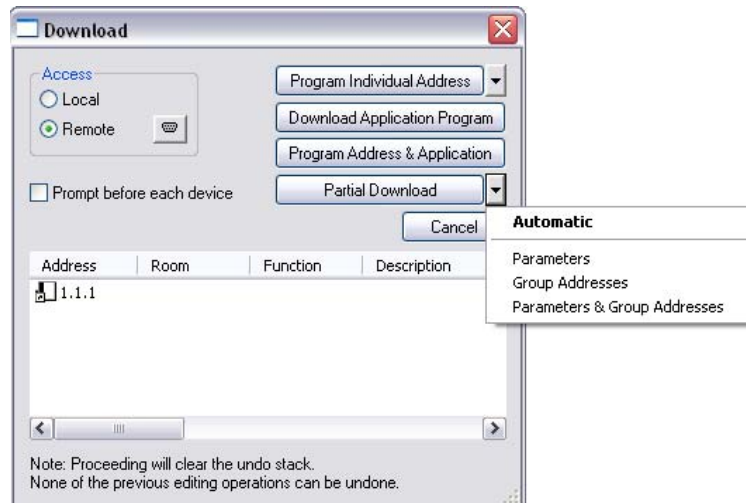
## PARTIAL DOWNLOADS – SECOND STEP: PROGRAMMING THE DEVICES

The second step consists on making partial parameter downloads on the devices.

To do this, please choose the device to be programmed and right mouse click to choose “**Download**”



Then click on the arrow to drop down the following menu.



Choose the type of download you want to make:

- Partial Download: Parameters.
- Partial Download: Group Addresses.
- Partial Download: Parameters and Group Addresses.

**It is very important to work with partial download directly choosing the desired option, avoiding as far as possible “automatic” partial programming , because this kind of download depends on the Log of ETS, and may result in longer downloads than necessary.**

Comments :

Email : [soporte@zennio.com](mailto:soporte@zennio.com)

Subject : Partial Download with ETS



**¡BECOME A USER OF ZENNIO PRODUCTS!**

<http://zennioenglish.zendesk.com>

**ONLINE TECHNICAL SUPPORT**